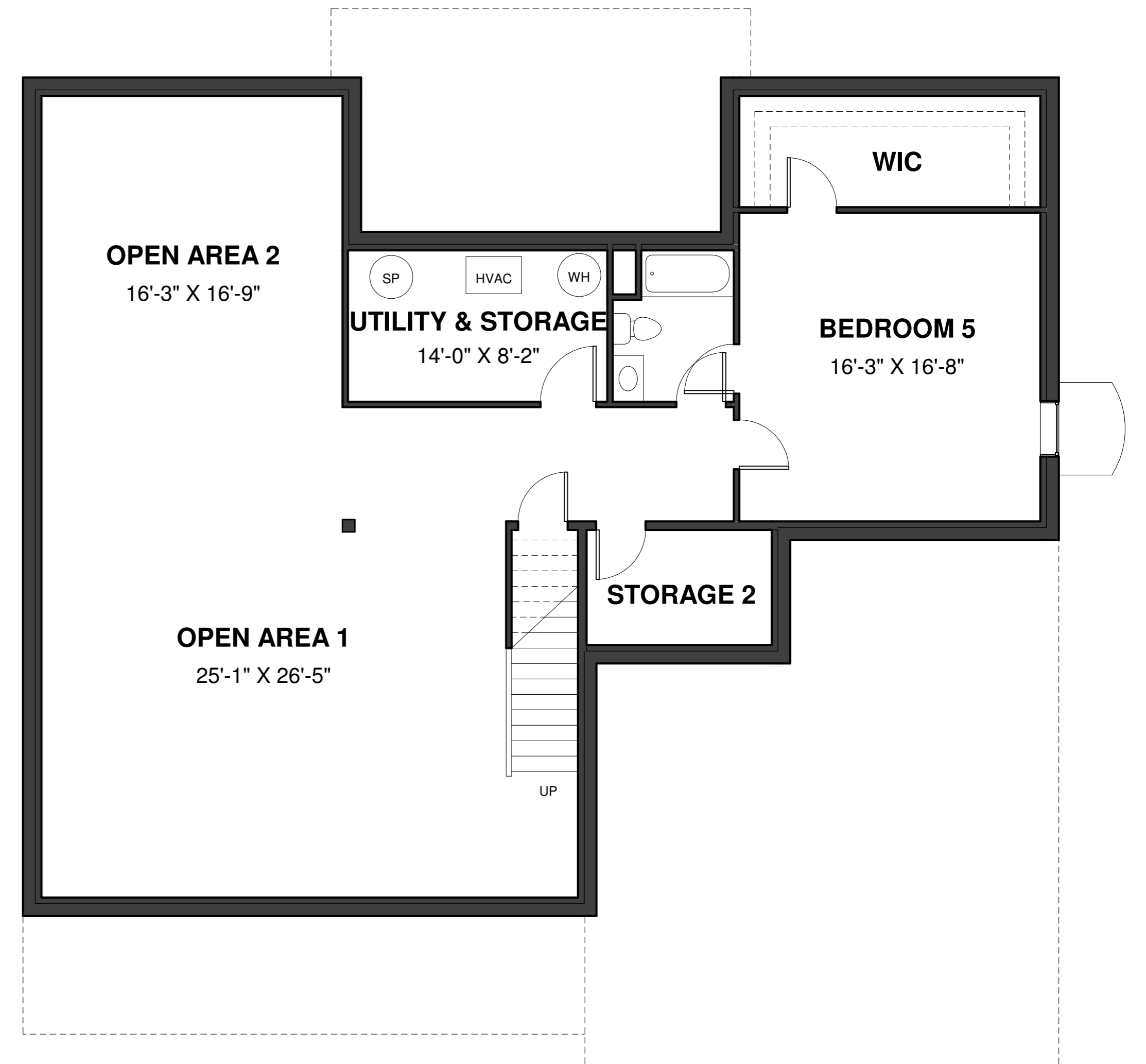


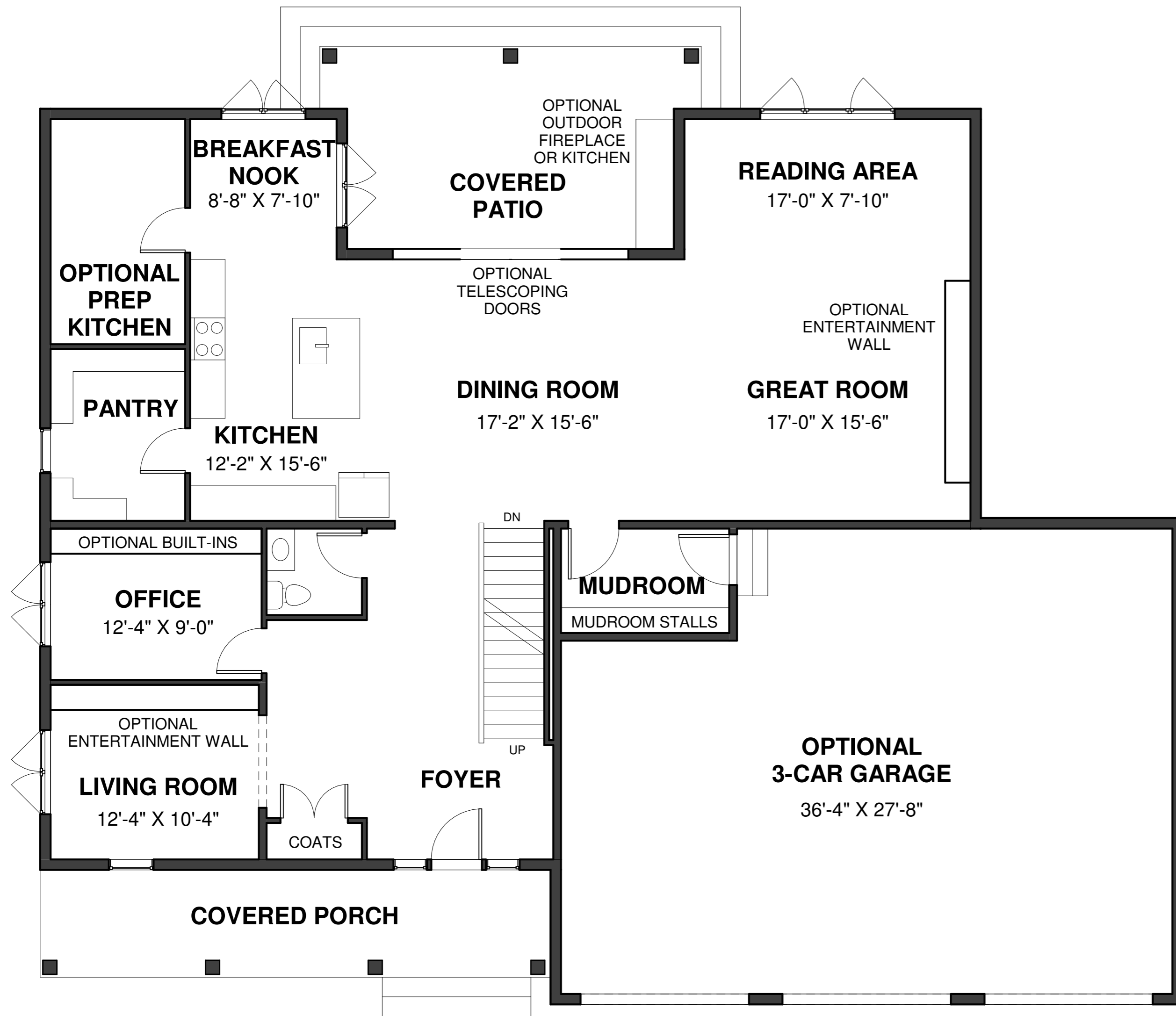
**DESIGN OPTIONS - BASEMENT FLOOR**

9' CEILING HEIGHT  
1,716 SF



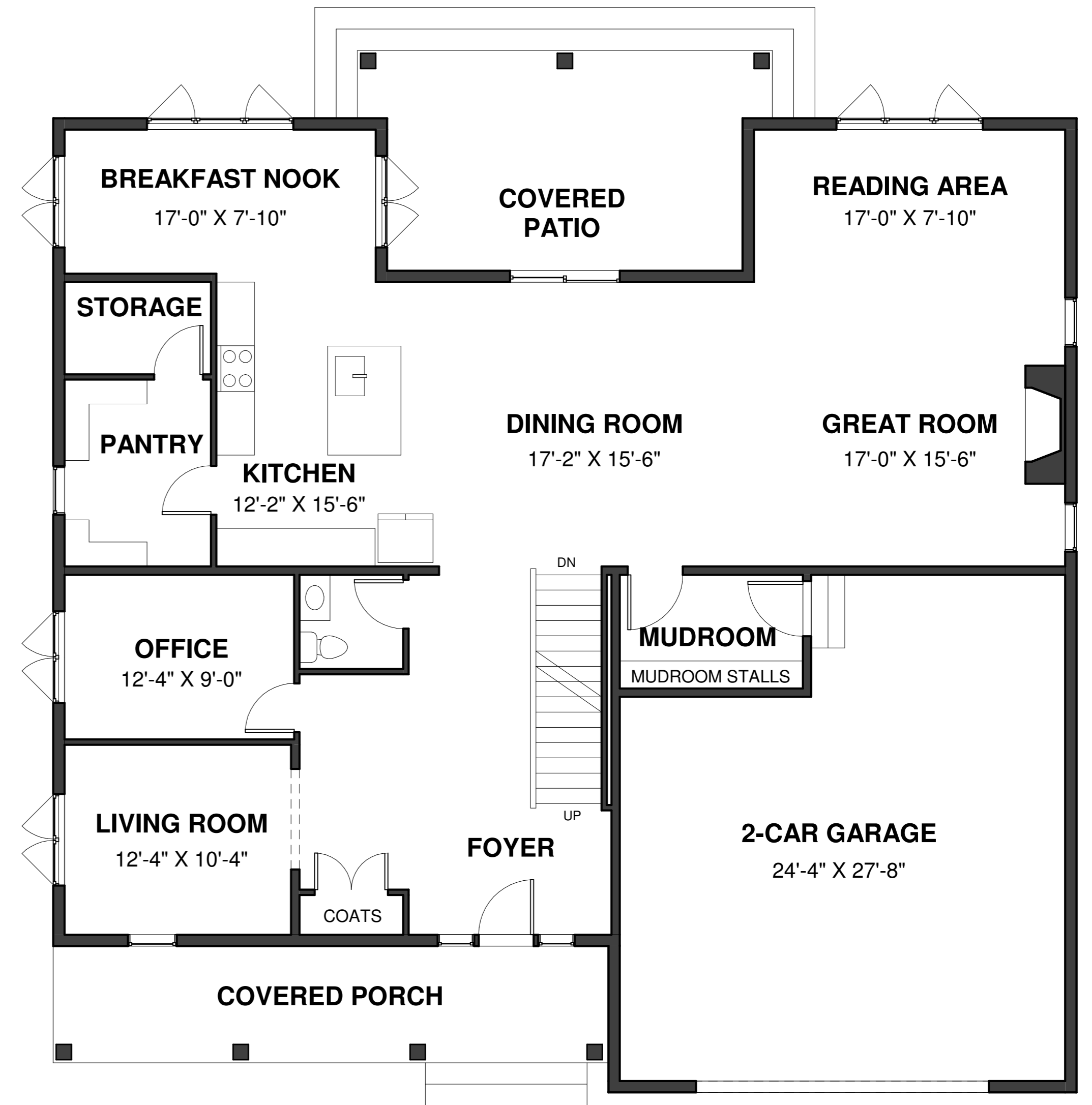
**BASE DESIGN - BASEMENT FLOOR**

9' CEILING HEIGHT  
1,716 SF



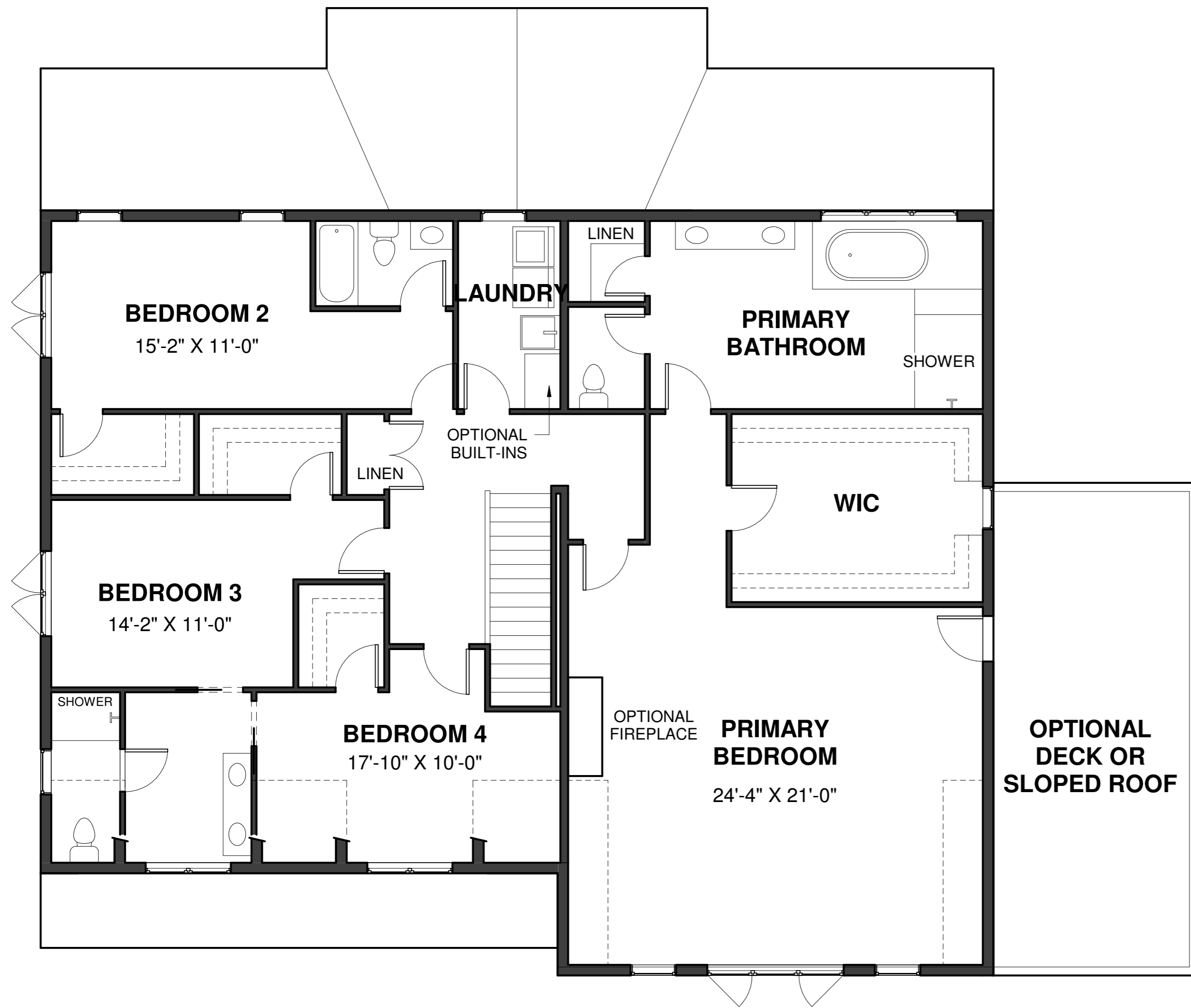
**DESIGN OPTIONS - FIRST FLOOR**

10' CEILING HEIGHT  
1,803 SF



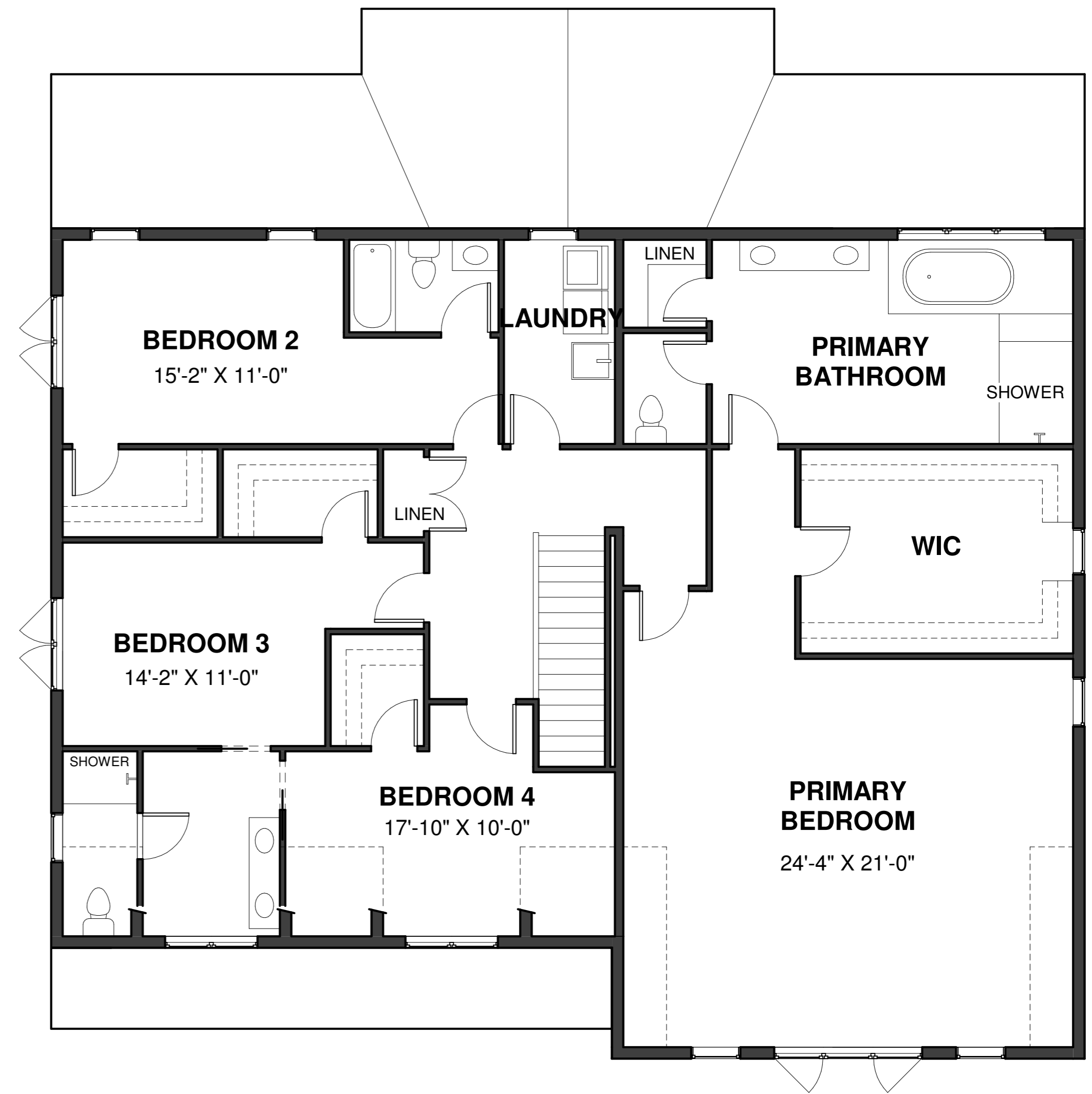
**BASE DESIGN - FIRST FLOOR**

10' CEILING HEIGHT  
1,803 SF



**DESIGN OPTIONS - SECOND FLOOR**

9' CEILING HEIGHT  
2,205 SF



**BASE DESIGN - SECOND FLOOR**

9' CEILING HEIGHT  
2,205 SF